



the
GREEN PEAK
townhomes
— PHASE II —



For marketing purposes only. Not to scale. Subject to change without notice.



Ken Bailey, Realtor®

603.817.7689 (direct)

kbailey@thegovegroup.com

70 Portsmouth Ave, Stratham, NH :: 603.778.6400 (office)

A new way of life awaits at the Green Peak Townhomes at Waterville Valley Resort. Whether you're looking for a permanent change or a second home to escape to, these townhomes offer the flexibility to suit your needs, with picturesque views, and endless activities and amenities no matter the season.

The Green Peak Townhomes Phase 2 consists of four buildings with three condo units each. The units will have 2-3+ bedrooms starting at 2,040 square feet with an optional finished walkout basement space and features like roof decks, ski storage, and more.

With maintenance-free living, Green Peak Townhomes can be your perfect escape all year round.

Each home features...

- Forced Hot Air Heat
- Central AC
- Gas fireplace
- Covered deck and roof deck
- Mudroom with ski storage
- First-floor study/optional bedroom
- 1 or 2-car garage
- 650+ sq.ft. of optional finished basement space
- Energy Star Certification and smart home package

This community offers...

- Public Water
- Public Sewer
- Metered Propane
- Maintenance-free living
- Easy access to Waterville Valley Ski Resort and Golf Course
- Year-round amenities include: downhill & cross-country skiing, golf, tennis, hiking, biking, disc golf, swimming, kayaking, ice skating, and more!

For marketing purposes only. Not to scale. Subject to change without notice.



A Revitalization in the Making



The master plan pictured above is a draft proposal and has yet to be approved by the Waterville Valley Planning Board. While the master plan depicts the desired vision of the Resort, it is subject to change and future amenities cannot be guaranteed at this time.

Green Peak Townhomes offer the opportunity to be part of the first phase of Waterville Valley Resort's proposed master plan of revitalization. With proposed plans for two new hotels and a conference center, additional retail establishments, three condo villages, a village green, and a gondola from the town center to the mountain, the future is bright for the Waterville Valley that you have come to know and love.

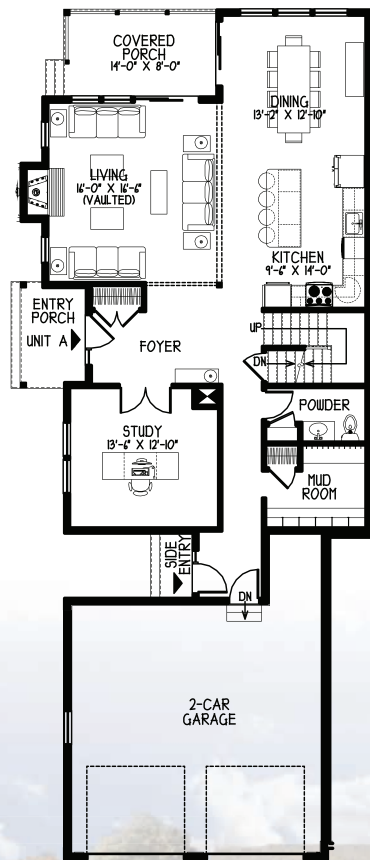
Floor Plans...

END UNITS

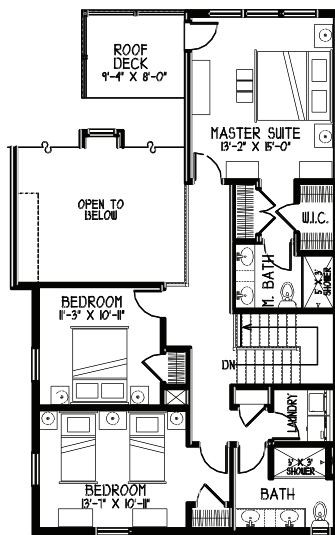
3 BEDS | 2.5 BATHS | 2,242 SQFT

OPTIONAL 687 SQFT FINISHED BASEMENT WITH HALF BATH

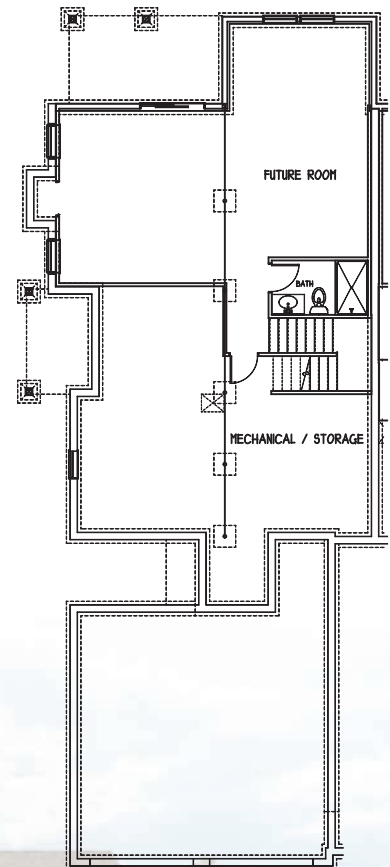
FIRST FLOOR



SECOND FLOOR



FINISHED BASEMENT
(Optional)



FOR MARKETING PURPOSES ONLY. NOT TO SCALE. SUBJECT TO CHANGE WITHOUT NOTICE. FLOOR PLAN WILL BE MIRRORED FOR OPPOSITE END UNIT.

This end unit floor plan stretches 2,242 square feet with 3-4 bedrooms & two-car garage.

Each unit boasts sophisticated amenities such as a stunning two-story living room with a gas fireplace, a covered deck on the first floor, a roof deck on the second floor, a first-floor study or optional bedroom, a mudroom with ski storage, optional finished space in the walkout basement, and more.

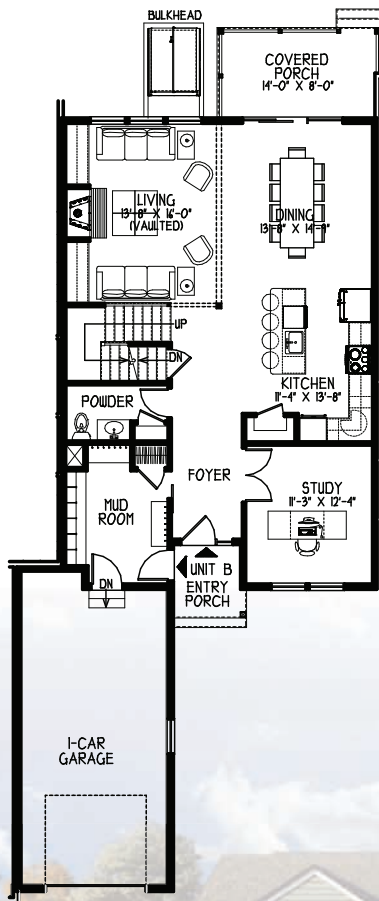
...to Suit any Lifestyle

INTERIOR UNITS

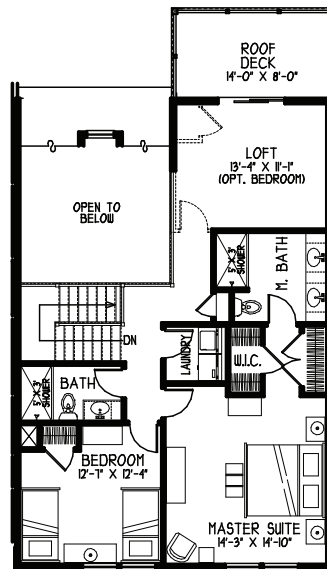
2 BEDS | 2.5 BATHS | 2,037 SQFT

OPTIONAL 650 SQFT FINISHED BASEMENT WITH HALF BATH

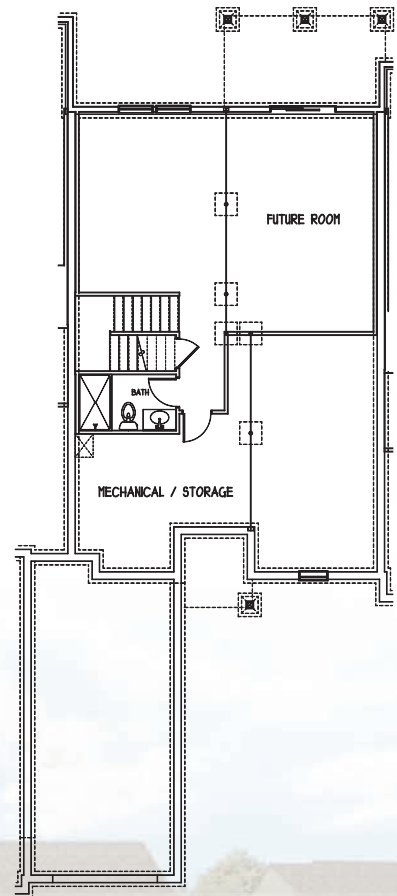
FIRST FLOOR



SECOND FLOOR



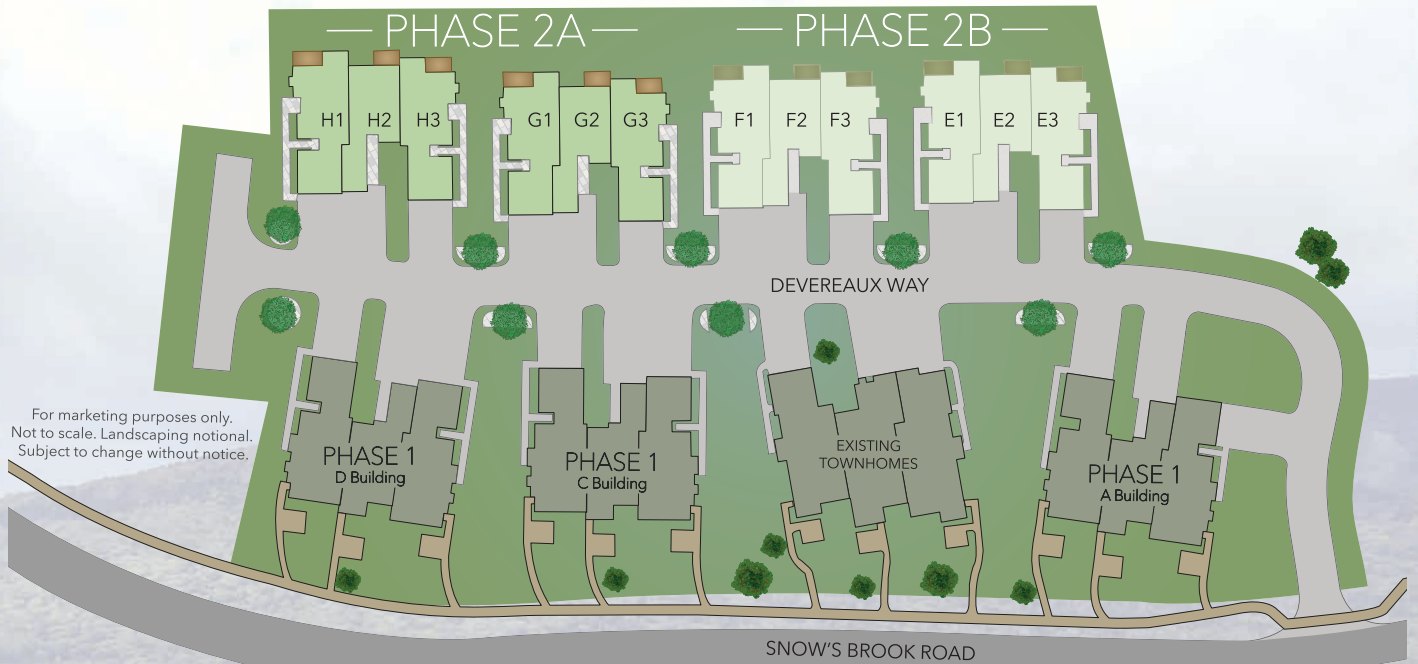
FINISHED BASEMENT
(Optional)



FOR MARKETING PURPOSES ONLY. NOT TO SCALE. SUBJECT TO CHANGE WITHOUT NOTICE.

This interior unit floor plan stretches 2,037 square feet with 2-3 bedrooms & one-car garage.

Green Peak Townhomes offer two flexible floor plans thoughtfully designed to accommodate a variety of uses and lifestyle options.



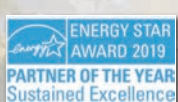
Smart Home

Smart Lifestyle

The Green Peak Townhomes feature a smart home package and Energy Star Certification to offer you comfort, peace of mind, and savings. As a market leader in energy efficiency, Chinburg Properties is proud to include smart home features at Green Peak Townhomes.

The smart package will include Nest Thermostats, a Nest “Hello” Doorbell, and Lutron Caseta Smart Lighting, including three interior and two exterior lights, all allowing you to keep a pulse on your home’s safety and energy efficiency even while you’re away.

Chinburg Properties Chinburg Properties has been committed to building Energy Star Certified Homes since 2004. In 2016, they won their first Energy Star Partner of the Year Award. In 2017, 2018, 2019, 2020, 2021 and 2022 they won again. Since they are multi-year winners of this award, they are now recognized in the Sustained Excellence Category for continuing the quality and commitment to Energy Star Homes for the fifth year, one of twelve builders nationally to receive this award.



Four Seasons *of fun*

No matter the season...

there are endless amenities and fun to be had at Waterville Valley Resort, one of only two year-round ski and golf resorts in New Hampshire.



From **skiing** in the winter to **golfing** in the summer and **hiking** every time in between, **you can do it all** in Waterville Valley.



Explore Points of Interest

Town Square



Waterville Valley Golf Course



Waterville Valley
Tennis Center



White Mountain
Athletic Club



Waterville Valley Ski Area



Town Beach at Corcoran's Pond



Waterville Valley Ice Arena



Waterville Valley Recreation Center



Coyote Grill



Numerous Trailheads and Hiking Paths in town!



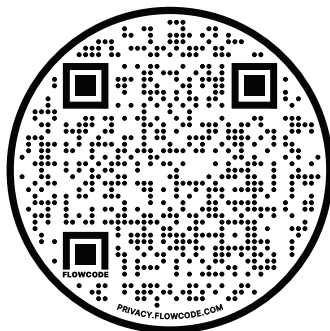


Ken Bailey, Realtor®
603.817.7689 (direct)
kbailey@thegovegroup.com

70 Portsmouth Ave, Stratham, NH :: 603.778.6400 (office)

TheGoveGroup.com

SCAN FOR MORE INFO!



This subdivision has not yet been registered with the New Hampshire Attorney General's Office. Until such a time as registration has been issued, only non-binding reservation agreements may be accepted.